

4 February 2022 | File Ref: 1/14/1 |

Released by: Dom Kalasih

## FULL NIGHT CLOSURES OF WELD PASS SH1 BLENHEIM

### Purpose

Following considerable collaboration and consultation with Transporting New Zealand, the periods of road closure to allow works to be undertaken on the Weld Pass have been determined and advised by Waka Kotahi NZ Transport Agency (Waka Kotahi) as follows.

### What you need to know

#### Full night closures Weld Pass, SH1, Blenheim over five nights from 13 February

Waka Kotahi crews will be working on the Weld Pass, on SH1 in Marlborough, for five nights from Sunday, 13 February.

The Weld Pass, between Blenheim and Seddon, will be fully closed for asphalt resurfacing. Emergency vehicles will be allowed through.

“After extensive consultation with the freight industry, the time has been altered to 10 pm to 6 am, cutting an hour off the earlier posted time,” says Peter Brown, Regional Manager Maintenance and Operations, Central and Lower South Island for Waka Kotahi. “This change will help reduce the impact on freight trucks linking with early-morning ferries on this key supply chain route.”

### Lewis Pass is the detour

The detour route will be via SH7, the Lewis Pass. It will add up to two hours to the truck journey compared to SH1, Picton to Christchurch.

---

**Please note:** The content of this Advisory has been issued to inform members of Transporting New Zealand. It is for road freight transport industry circulation, not for media publication. It can be forwarded in its entirety to members of Transporting New Zealand. It cannot be reproduced, or printed in parts, under any logo other than la Ara Aotearoa Transporting New Zealand's logo, without written permission from Transporting New Zealand.

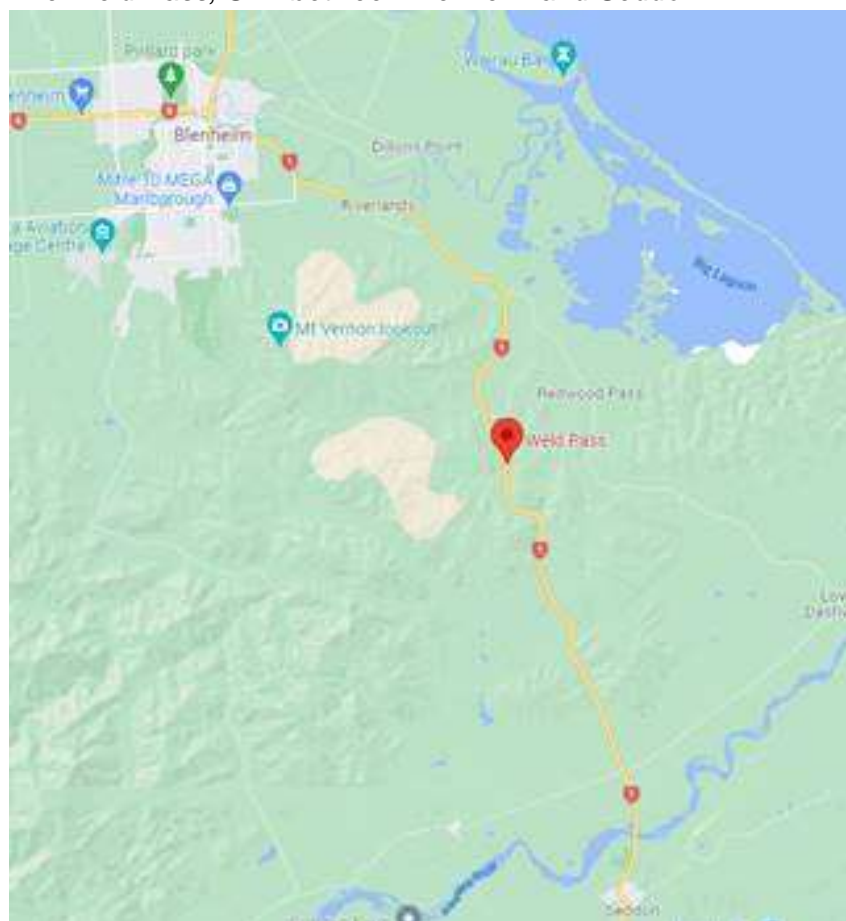
The work will run from Sunday 13 February through to Thursday night, 17 February, 10pm to 6 am the next day. Weld Pass is a winding section of SH1 (see aerial view below).

SH1 will fully open each morning at 6am. The work is weather dependent so rain could move these dates forward.

Waka Kotahi thanks all drivers who will be inconvenienced by this work and encourages everyone to plan for the opening times if they can.

Electronic mobile signs will advertise the closures at each end ie near Blenheim at the Roadhouse entry and in Seddon as well as fixed signs in other places.

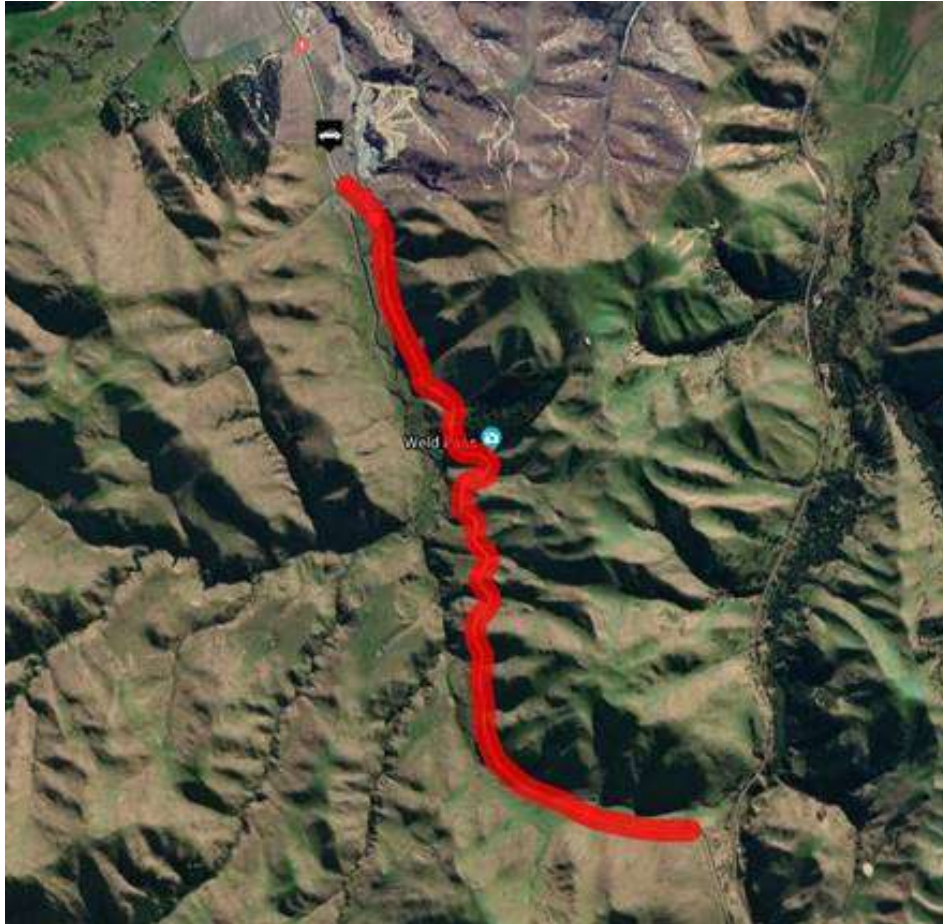
*The Weld Pass, SH1 between Blenheim and Seddon:*



*An aerial view of SH1 Weld Pass:*

---

**Please note:** The content of this Advisory has been issued to inform members of Transporting New Zealand. It is for road freight transport industry circulation, not for media publication. It can be forwarded in its entirety to members of Transporting New Zealand. It cannot be reproduced, or printed in parts, under any logo other than la Ara Aotearoa Transporting New Zealand's logo, without written permission from Transporting New Zealand.



**Plan ahead for a safe, enjoyable journey. Keep up to date with:**

- COVID-19 services update: [nzta.govt.nz/COVID19](https://nzta.govt.nz/COVID19)
- Traffic updates: [journeys.nzta.govt.nz/traffic](https://journeys.nzta.govt.nz/traffic)
- Facebook: [facebook.com/NZTASouthIsland](https://facebook.com/NZTASouthIsland)
- Twitter Top of the South: [twitter.com/WakaKotahiTOTS](https://twitter.com/WakaKotahiTOTS)
- Journey planner: [journeys.nzta.govt.nz](https://journeys.nzta.govt.nz)
- Phone: 0800 4 HIGHWAYS (0800 44 44 49)

---

**Please note:** The content of this Advisory has been issued to inform members of Transporting New Zealand. It is for road freight transport industry circulation, not for media publication. It can be forwarded in its entirety to members of Transporting New Zealand. It cannot be reproduced, or printed in parts, under any logo other than la Ara Aotearoa Transporting New Zealand's logo, without written permission from Transporting New Zealand.